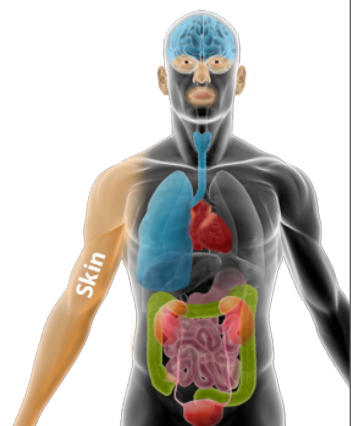


Affected Areas

Central Nervous System
Autonomic Nervous System



Immediate Symptoms

Altered mentation
Agitation
Obtundation
Confusion

Increased
Pupil size (mydriasis)
Respirations (hyperventilation)
Pulse
Blood pressure
Sweating (diaphoresis)

Carpopedal spasm

Ongoing Symptoms

Progression of agitation to panic
Potential for loss of consciousness or convulsions

CHEMM

Not meant to be a complete care guideline. Please refer to the CHEMM website for more information: <http://chemm.nlm.nih.gov/mmghome.htm>

Examples

Chemical Warfare Agents

None currently listed

Toxic Industrial Chemicals/Toxic Industrial Materials

Mephedrone
Amphetamines

Common Treatment Protocols

General supportive care
Proximity, immediacy, expectancy (PIE)
Simplicity, proximity, immediacy, centrality, expectancy (SPICE)
Benzodiazepines

Sensitive Populations

No particularly sensitive populations

Concerns About This Syndrome

Syndrome may also be triggered by:

Exposure to upsetting
Smells
Sights
Sounds
Situation

Recognition by providers that casualties with this toxidrome may have a stress response, a toxicological reaction to a sympathomimetic drug, or both.

CHEMM

Not meant to be a complete care guideline. Please refer to the CHEMM website for more information: <http://chemm.nlm.nih.gov/mmghome.htm>